



**ELECTRONIC COPY**

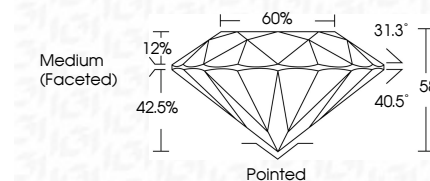
575389689  
Report verification at [igi.org](http://igi.org)



August 21, 2024  
IGI Report Number **575389689**  
Description **NATURAL DIAMOND**  
Shape and Cutting Style **ROUND BRILLIANT**  
Measurements **7.34 - 7.37 X 4.26 MM**

**GRADING RESULTS**

Carat Weight **1.40 CARAT**  
Color Grade **F**  
Clarity Grade **I1**  
Cut Grade **EXCELLENT**



**ADDITIONAL GRADING INFORMATION**

Polish **EXCELLENT**  
Symmetry **EXCELLENT**  
Fluorescence **NONE**  
Inscription(s) **IGI 575389689**



**IGI**

August 21, 2024  
IGI Report No 575389689  
**ROUND BRILLIANT**  
7.34 - 7.37 X 4.26 MM  
1.40 CARAT  
F  
I1  
EXCELLENT  
85%  
60%  
Medium (Faceted)  
Pointed  
EXCELLENT  
EXCELLENT  
NONE  
IGI 575389689

**DIAMOND REPORT**

August 21, 2024  
IGI Report Number **575389689**  
Description **NATURAL DIAMOND**  
Shape and Cutting Style **ROUND BRILLIANT**  
Measurements **7.34 - 7.37 X 4.26 MM**

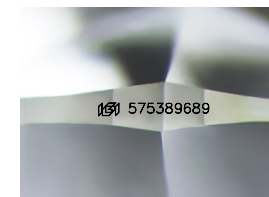
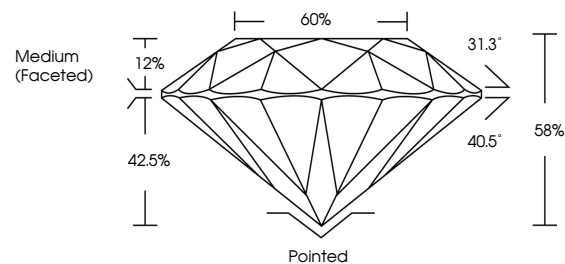
**GRADING RESULTS**

Carat Weight **1.40 CARAT**  
Color Grade **F**  
Clarity Grade **I1**  
Cut Grade **EXCELLENT**

**ADDITIONAL GRADING INFORMATION**

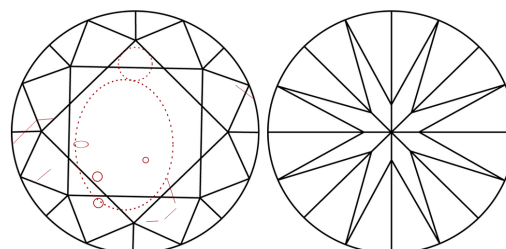
Polish **EXCELLENT**  
Symmetry **EXCELLENT**  
Fluorescence **NONE**  
Inscription(s) **IGI 575389689**

**PROPORTIONS**



Sample Image Used

**CLARITY CHARACTERISTICS**



**KEY TO SYMBOLS**

Red symbols indicate internal characteristics.  
Green symbols indicate external characteristics.

**COLOR**

D - F	G - J	K - M	N - R	S - Z	FANCY
Colorless	Near Colorless	Slightly Tinted	Very Light Color	Light Color	

**CLARITY**

IF	VS <sup>1-2</sup>	VS <sup>1-2</sup>	SI <sup>1-2</sup>	I <sup>1-3</sup>
Internally Flawless	Very Very Slightly Included	Very Slightly Included	Slightly Included	Included

